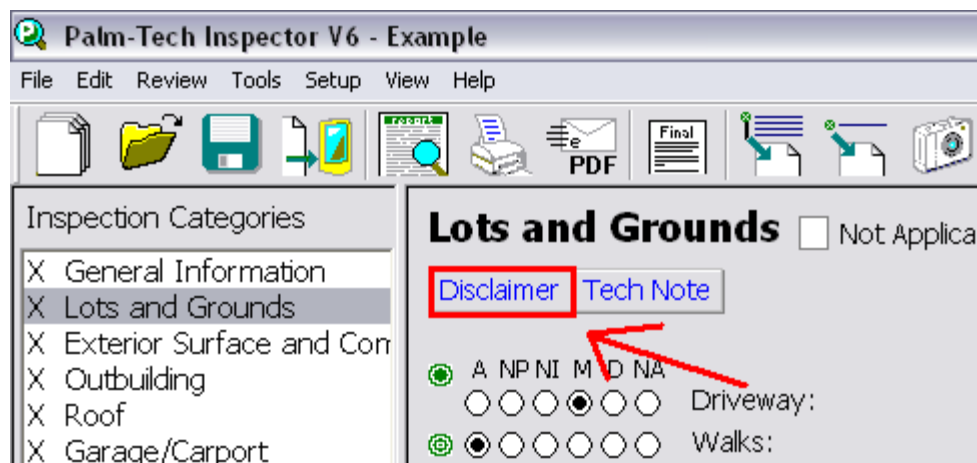


Palm-Tech Inspection Software is used by a wide number of companies, all with different inspection procedures. In your Palm-Tech software you have the ability to set custom disclaimers which will clearly outline what your company does and does not do throughout the course of an inspection. This step-by-step guide will take you through the process of setting up disclaimers.

Setting up your custom disclaimers

1. Open an inspection.
2. Locate the "Disclaimer" button near the top of the category window. For this example, we see the "Disclaimer" button for the category "Lots and Grounds".



3. Click on the "Disclaimer" button. This will bring up the Disclaimer Edit window.

How To: Add a disclaimer to your inspections.

4. Type your inspection disclaimer in the biggest text field occupying the lower half of this window.
 - a. If you plan on using this disclaimer for every inspection moving forward, click on the "Make Default Disclaimer" button.
 - b. Please note that you will have to do this for every category you wish to include a disclaimer with.

Disclaimer: Lots and Grounds

Note Color: Black

Common Notes:

Your inspection disclaimer goes here!

Make default disclaimer

5. Click on "Ok" when you are finished editing. You have now added a disclaimer to your report!