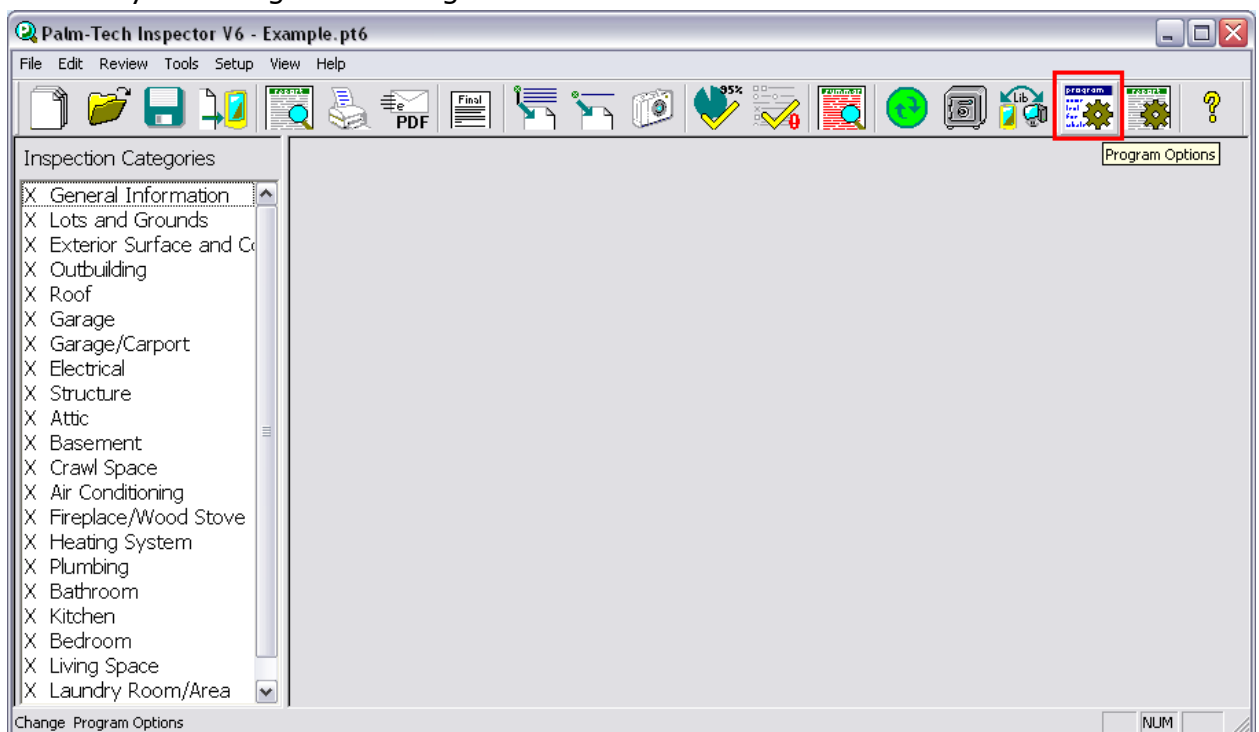


Palm-Tech Home Inspection Software can be configured in a number of ways to make the finished report look and feel exactly as you want it to, but you can also change the way the program works while you're working on it. For example, if instead of a dropdown for ratings you'd prefer to have something similar to checkboxes, you can do that. And this step-by-step guide shows you how.

## Show ratings individually in the input field

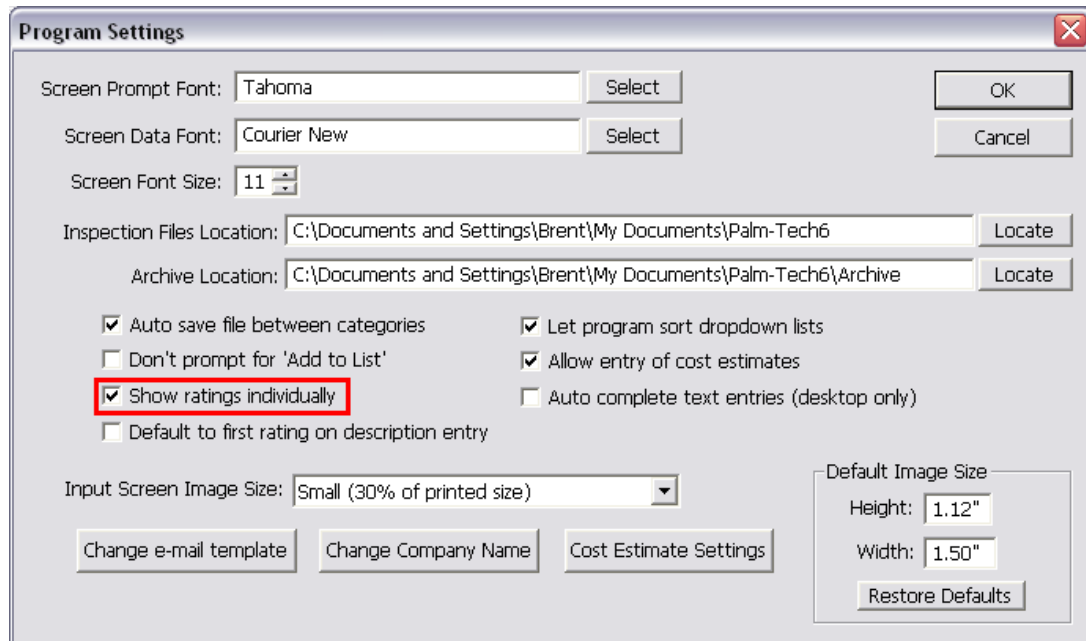
1. Click on your "Program Settings" button.



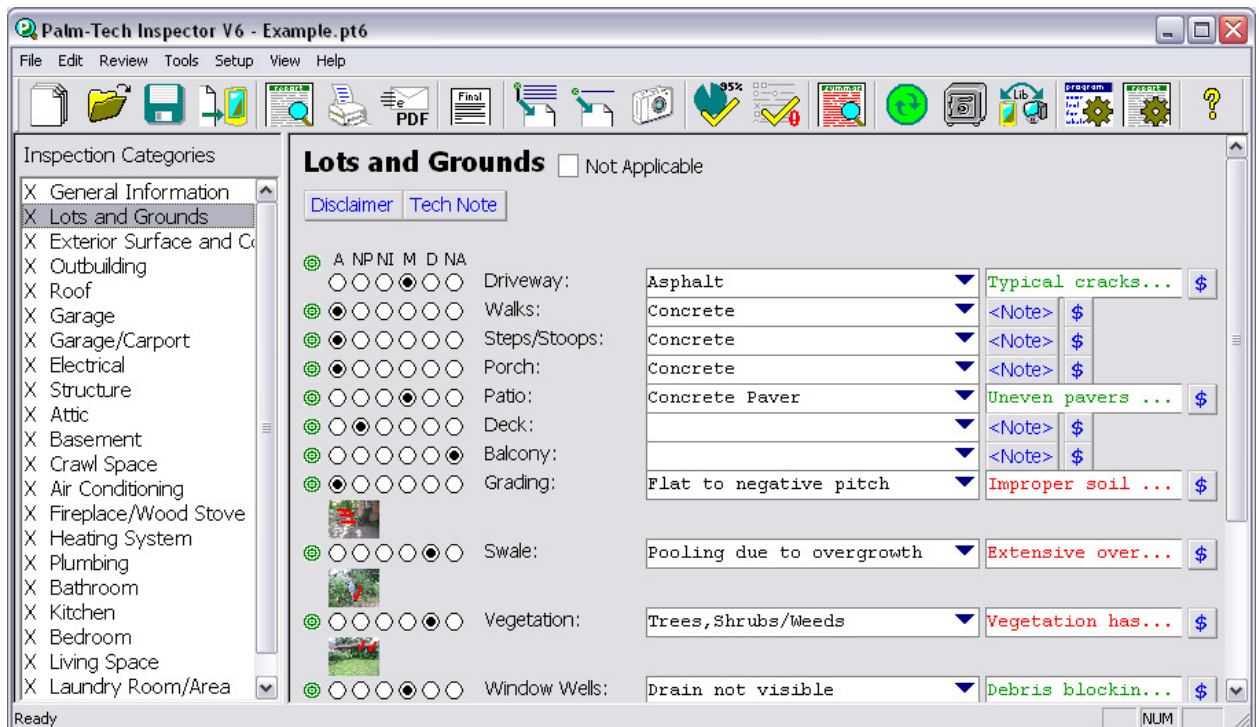
2. This will bring up your program options.

## How To: Show ratings individually in the input field

3. Locate the box that reads "Show Ratings Individually" and ensure that it is checked in.



4. Click on "Ok" when finished.
5. Verify that your input field shows the data the way you prefer.



6. You are now finished changing your input field to show ratings individually.