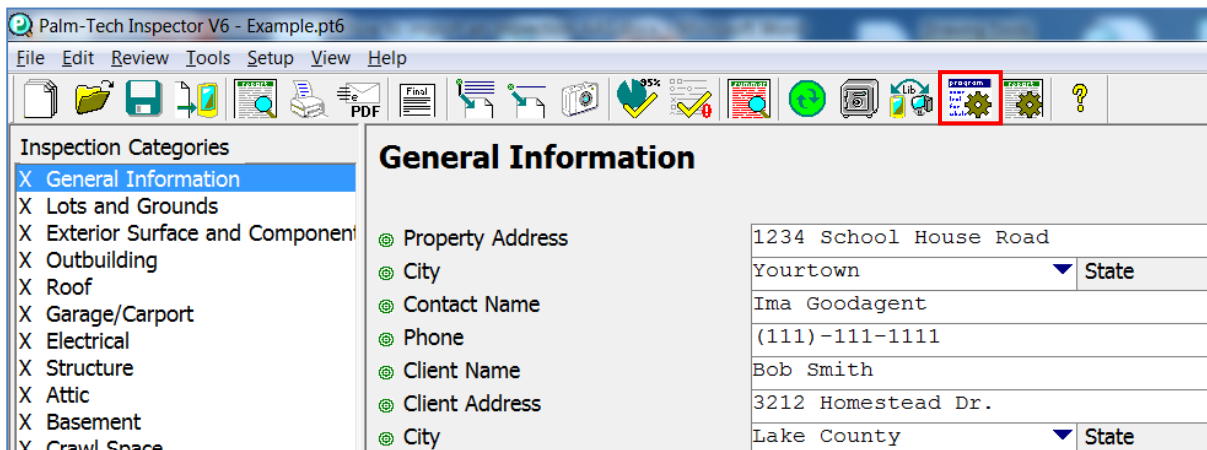


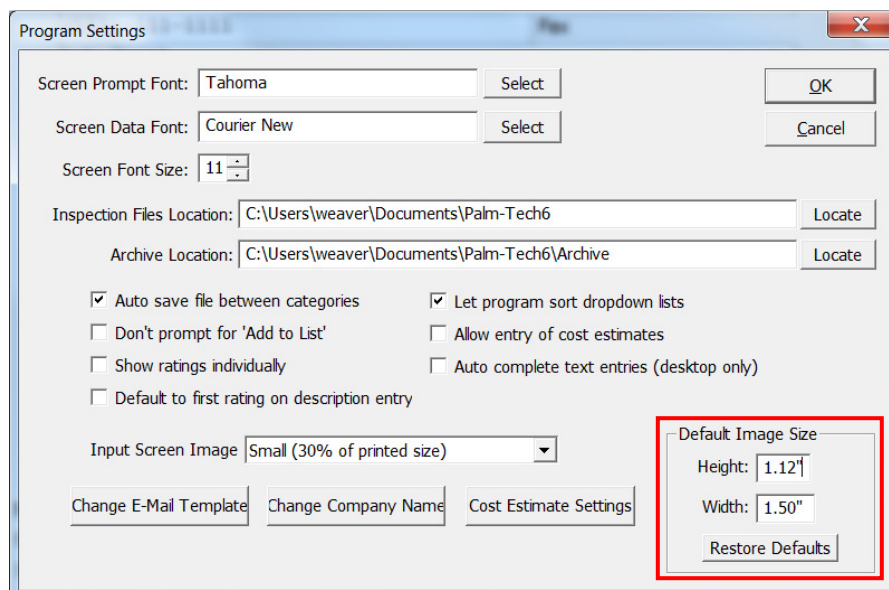
This How To will show you how to edit the default size for pictures that are inserted into your report.

Changing the Default Picture Size

1. With an inspection open, click on the Program Settings icon in the menu or click Setup > Program Settings.



2. In Program Settings, you can edit the size of your pictures by changing the height and width under 'Default Image Size'. You can also choose to restore the default image size back the original setting by clicking on 'Restore Defaults'.



How to: Change the Default Picture Size

3. Once you edit the image height and width to the desired size, click OK.

