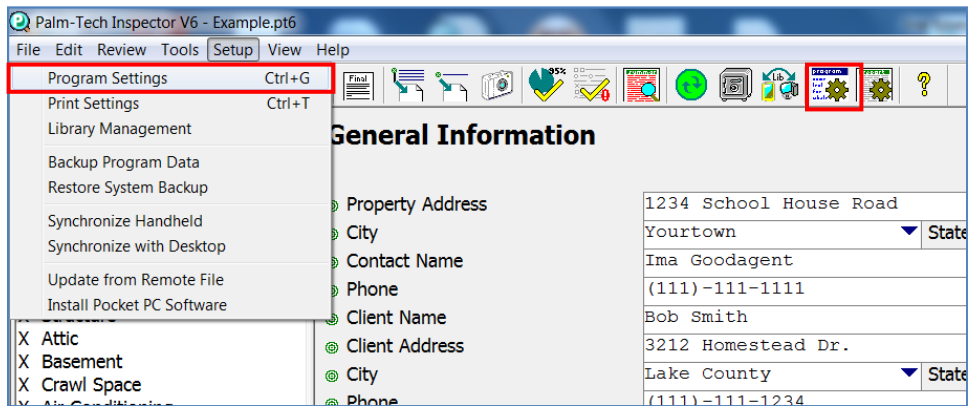


Palm-Tech makes it easy to change the screen font of your inspection software.

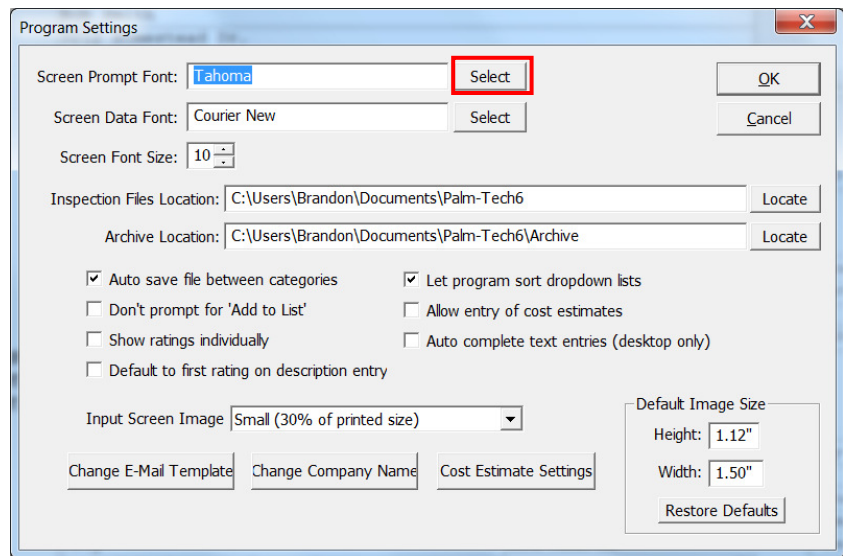
NOTE: The screen font is what you will see when filling out your inspection report, this is not the font that will show up on your printed report. The fonts on your printed report can be changed by going to Setup > Print Settings > Fonts.

Editing the Screen Font

1. With an inspection open, click on Setup > Program Settings or click on the Program Settings icon in the menu.

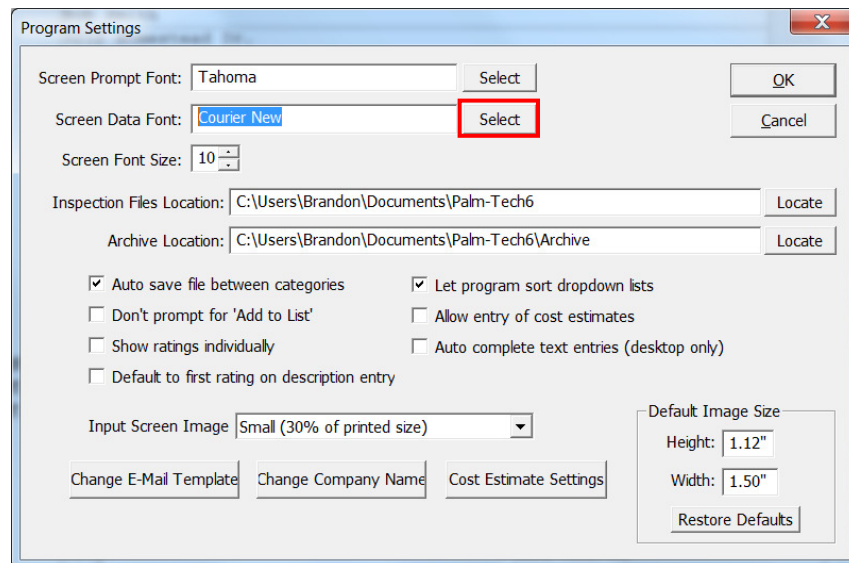


2. At the top of the Program Settings box, you can change the Screen Prompt Font. This is all of the text that is included in the template, such as Driveway and Windows. You can edit the Screen Prompt Font by clicking on 'Select'.



How to: Edit the Screen Font

- The next box is for the Screen Data Font. This is the text that you input into your report, such as ratings, descriptions, and notes. You can edit the Screen Data Font by clicking on 'Select'.



- The third box is for the Screen Font Size. This is the size of the text that shows up when filling out a report in Palm-Tech.

