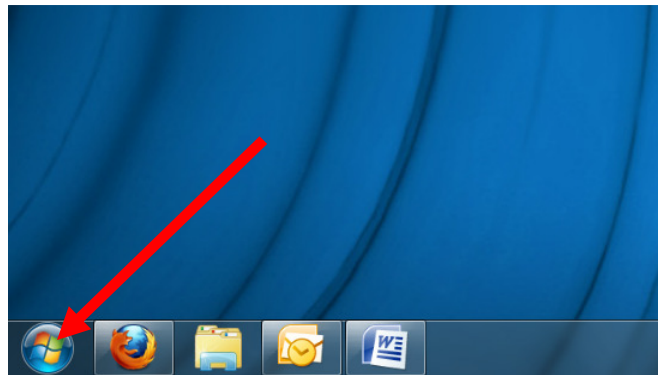


With version 6 of Palm-Tech you can easily import all of your libraries and templates from version 5. This allows you to bring over all of the information you added to dropdowns and customizations you have to templates over the years.

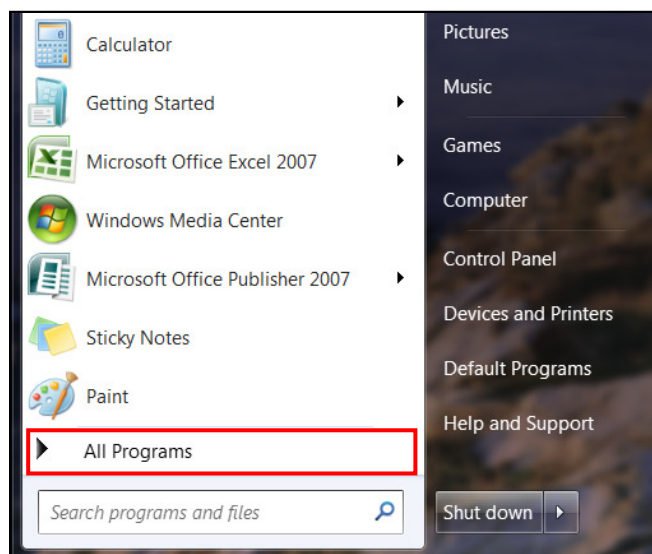
**Note: To import your version 5 data into version 6, you must have both versions installed on the same PC.**

### Importing Version 5 Data

1. First, close out of all Palm-Tech programs on your PC. Next, click on Start.

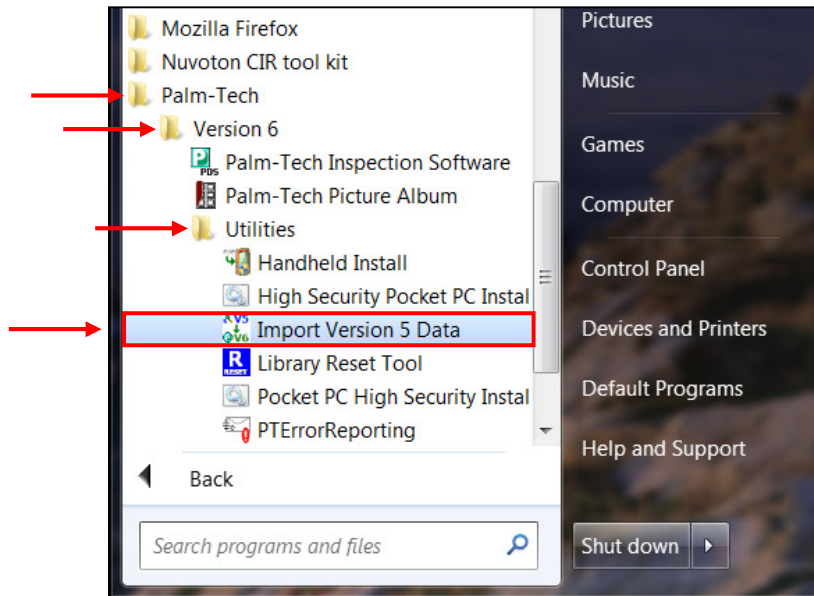


2. Now click on All Programs.

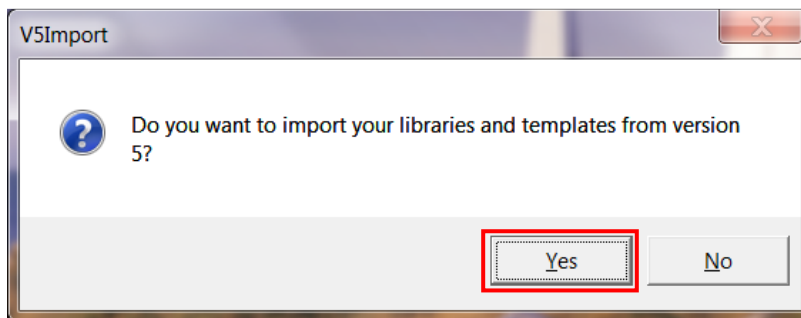


## How to: Import V5 Data Into V6

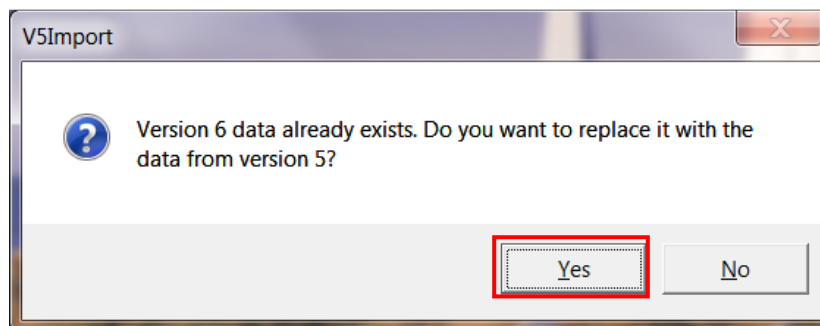
3. Next click on Palm-Tech > Version 6 > Utilities > Import Version 5 Data.



4. A box will pop up asking if you want to import your libraries and templates from version 5, click 'Yes'.



5. Another box will pop up asking if you want to replace your version 6 data with your version 5 data, click 'Yes'.



## How to: Import V5 Data Into V6

6. You will notice a progress bar on the screen and you should see your data being imported.

**NOTE:** If you are prompted to locate your version 5 folder, then this means that your Palm-Tech5 folder is not saved in the default location. Simply locate where version 5 is installed, highlight it and click 'OK'.

7. The import process is now complete. To confirm it was completed successfully, start a new inspection with Palm-Tech6 and check if your custom templates/dropdown answers are present.