

This is a step-by-step walk-through for anyone who is trying to update their Palm-Tech software from Version 4 to Version 6.

NOTE: In order to follow the steps in this guide you will need to have purchased the Version 6 upgrade and have received an email from Palm-Tech with instructions.

1. In order to update to Palm-Tech version 6, you first need to download and install the demonstration for Version 5 so that you can transfer over your libraries and templates.
 - a. Download the demo for Version 5 here: <http://www.palm-tech.com/downloadv5demo.php>



Palm-Tech Home Inspection Software Demo V5

Download the Palm-Tech home inspection software Version 5 Demo.

This is an **older version** of the program and should only be downloaded if you want to install this specific outdated version.

Version 6 is the most recent version of the program. To download version 6, visit [download version 6](#).

[Click here for more info about what's new in Palm-Tech home inspection software Version 6.](#)

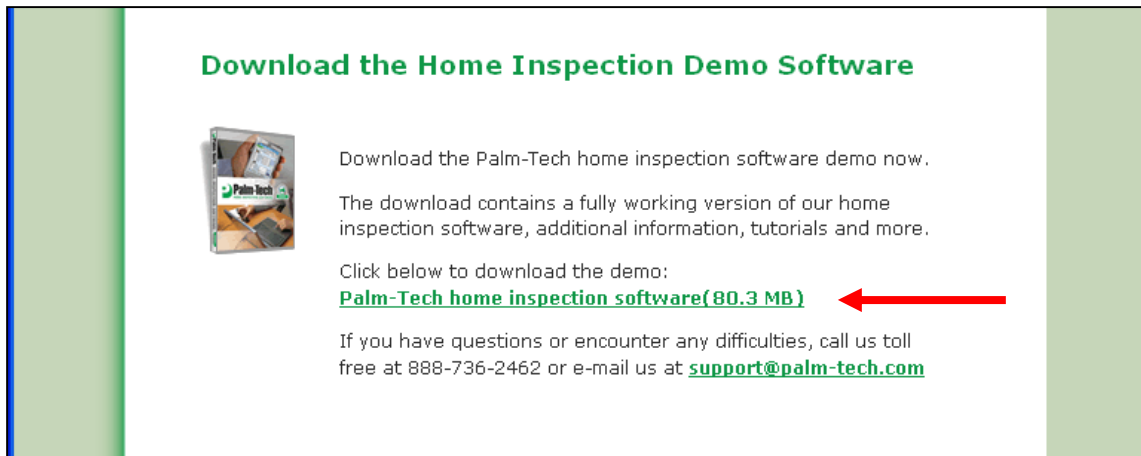
Click below to download the version 5 demo
[Palm-Tech home inspection software Version 5 \(69.1 MB\)](#)

If you have questions or encounter any difficulties, call us toll free at 888-736-2462 or e-mail us at support@palm-tech.com

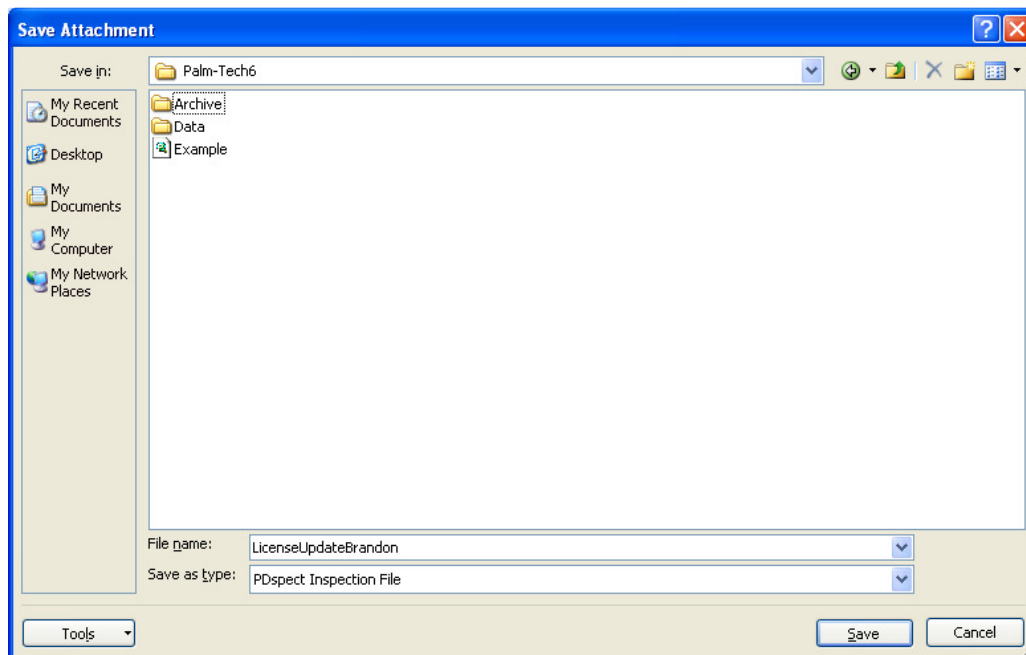
2. After you have downloaded the demo, run it.
3. At the end of the installation, you will be prompted to import your Version 4 library and templates, select 'Yes'.

How to: Update from Version 4 to Version 6

4. Next, you will need to download and install the demonstration for Version 6.
 - a. Download the demo for Version 6 here: <http://www.palm-tech.com/DownloadDemo.php>



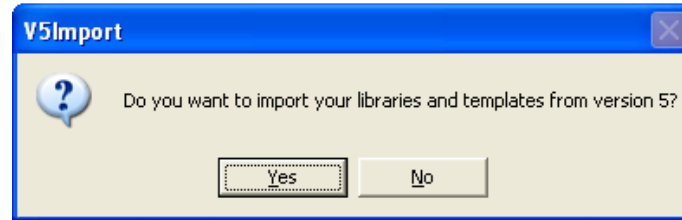
5. After you have downloaded the demo, run it.
6. Next, open the email you received from Palm-Tech containing your new License Update. Save the attached License Update to your Palm-Tech 6 folder located in 'My Documents'.



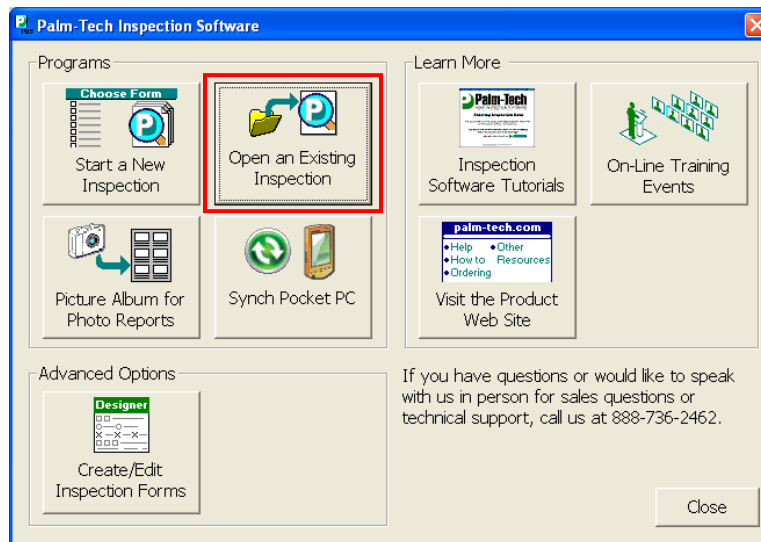
7. Start Palm-Tech Version 6 by double clicking on the icon on your desktop.

How to: Update from Version 4 to Version 6

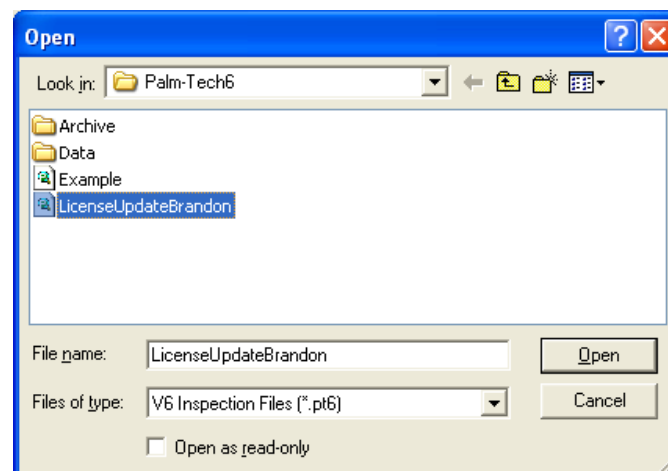
- When asked if you want to import your libraries and templates from Version 5, click 'Yes'.



- When the import has finished, select 'Open an Existing Inspection'.



- Select your License Update that you saved from the email and click 'Open'.



- Palm-Tech will walk you through the update process after which you will be ready to begin using Version 6.