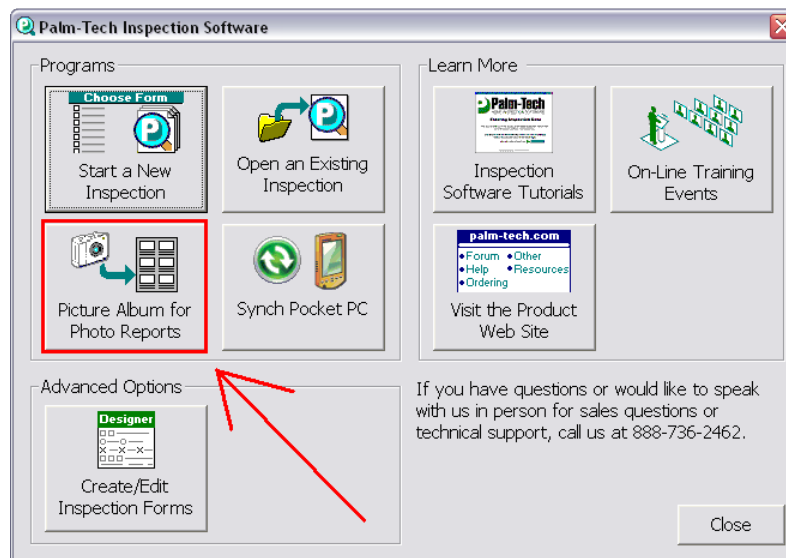


Palm-Tech Home Inspection Version 6 includes the program Photo Album, which allows you to create a photo-centric version of your inspection. This guide will take you through the process of getting started with creating an album.

Creating a new photo album

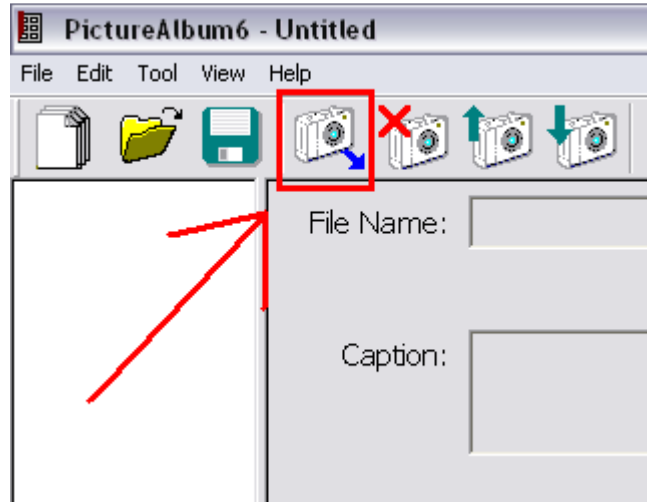
1. Open your Palm-Tech Inspector software and click on "Picture Album for photo reports".



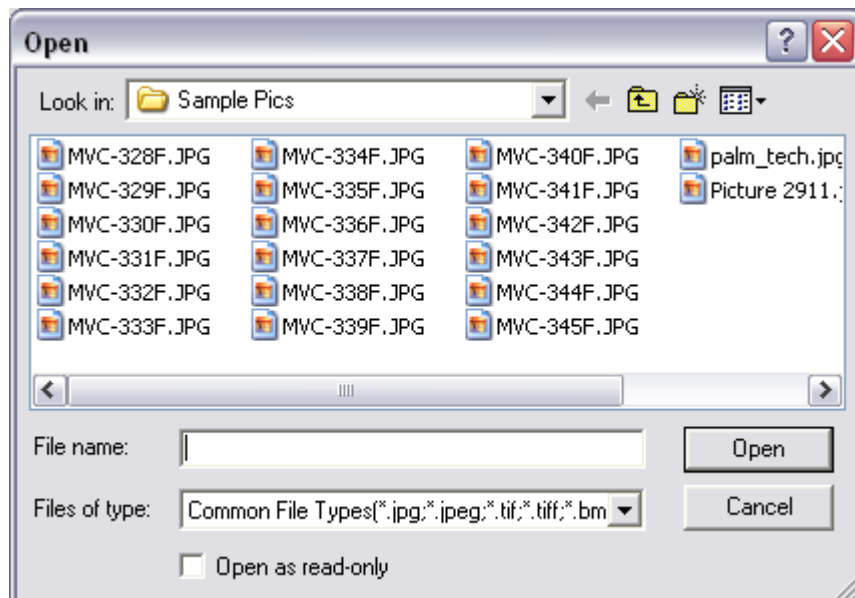
2. This will bring up the inspection window.
 - a. You will notice you cannot edit the fields that are in here. This is because we haven't added any pictures to this report yet.

How To: Start a new album using Photo Album

3. Click on the "Add Images" button, located near the top of your screen.

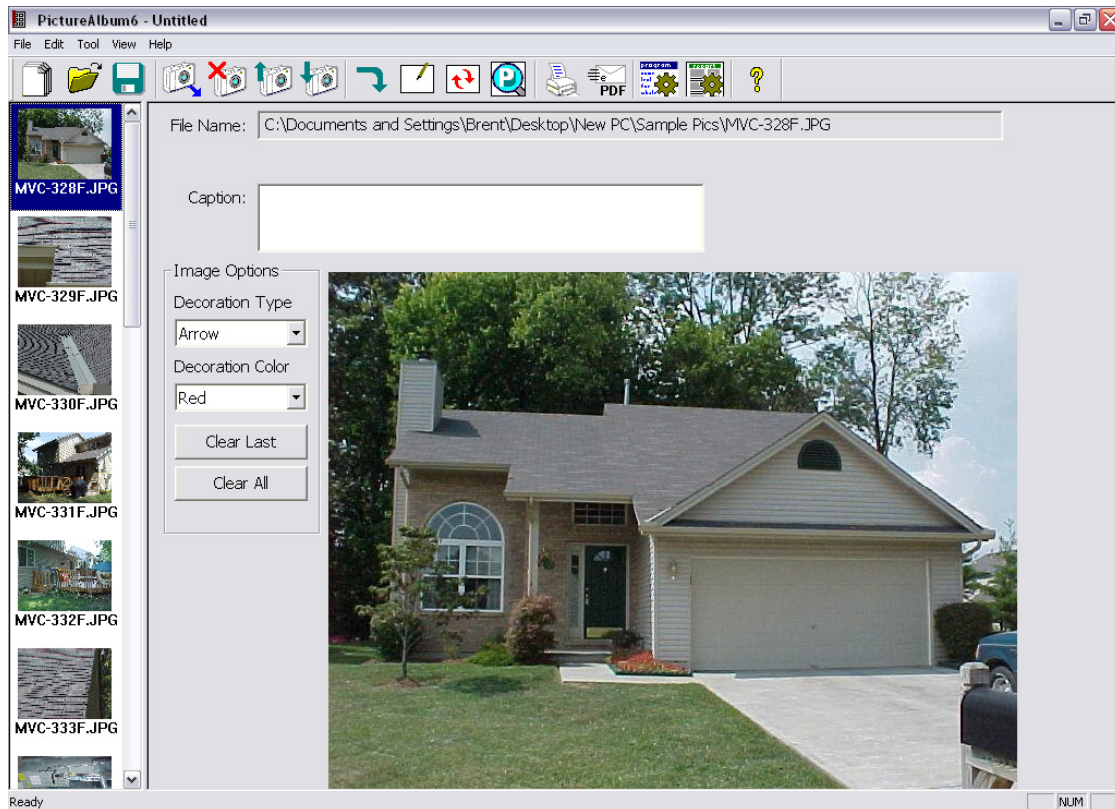


4. Locate your picture files. This will be dependant of where you save pictures on your PC, however most will be in "My Pictures".



5. When you add a picture, you will see a message telling you there is more than one picture in the folder and ask if you want to add them all. If all of the pictures for your report are in this folder, click yes. Otherwise click no.

How To: Start a new album using Photo Album



6. Now that pictures are added to the report, you will now notice that the text fields that previously could not be edited can now be filled in. You are ready to begin your photo album now.