

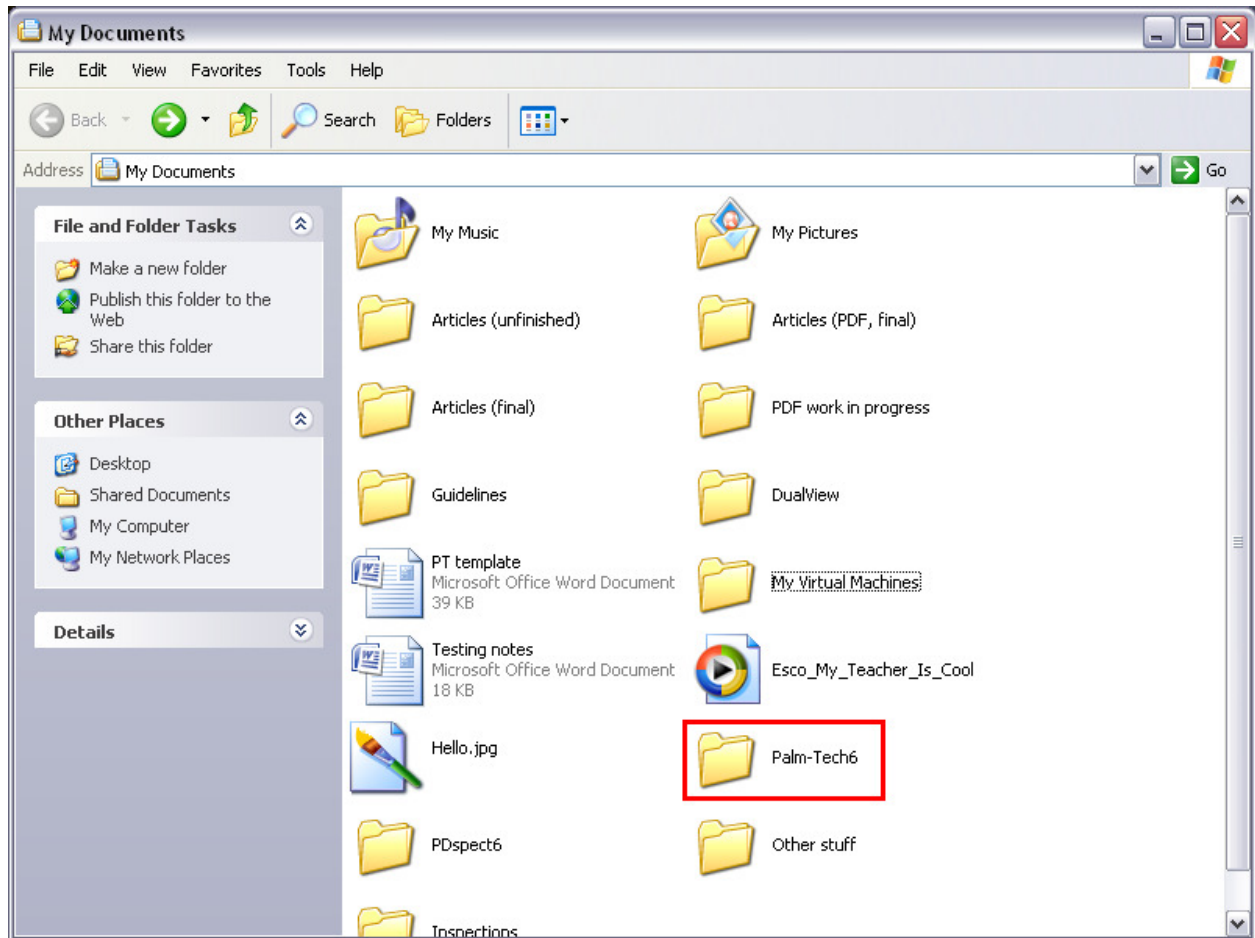
Unlike past versions of Palm-Tech, in version 6 your template and library files are not directly located in your program files. Instead you can find them in your "My Documents" folder, making it quick and simple to reset all of your information back to default if need be. This guide will take you step-by-step through the restore process.

Keep in mind, this is something that is typically a **last resort** if absolutely no other fixes work. If your libraries and/or templates are completely corrupted, use this method. Otherwise try one of our other how-to guides on library management and template creation and usage first.

Restoring default templates and libraries

1. Close any open Palm-Tech inspector windows you may have open. Be sure to save any work you do not want to lose.
2. Click on your "Start" button, typically located in the lower-left corner of your screen.
3. Click on "My Documents".
 - a. In Windows Vista and 7, this folder will be called whatever your username to log into the computer is. From there, look in "Documents".
4. Locate your Palm-Tech 6 folder.

How To: Restore default template and library files



5. Right-click on the Palm-Tech6 folder and select "Rename".
6. This will highlight the text for the current folder name. Rename it something simpler to remember, such as "Palm-Tech6(old)".
 - a. By renaming the file instead of simply deleting it, all of your salvageable information, such as your inspection files, will not be lost.
7. Start Palm-Tech Inspector 6. You will see a screen with a green progress bar that says "Building your profile". You have just rebuilt your default library and template files.