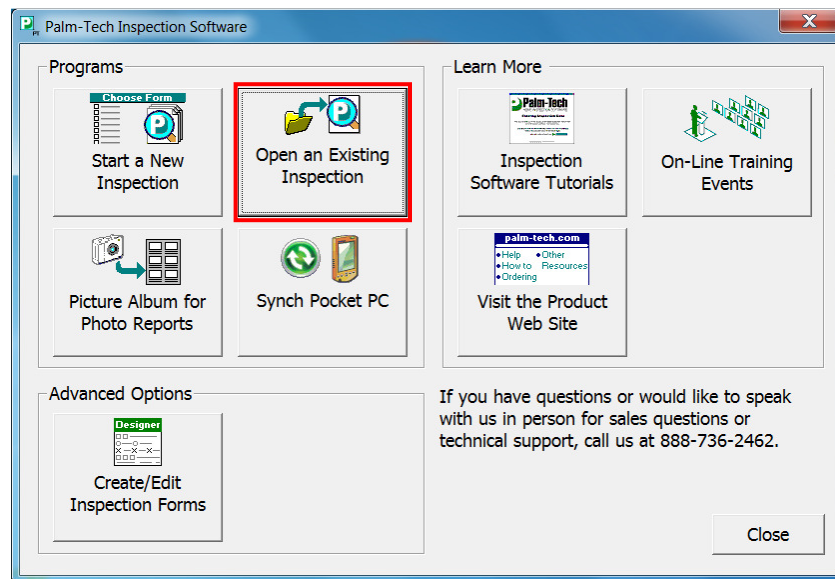


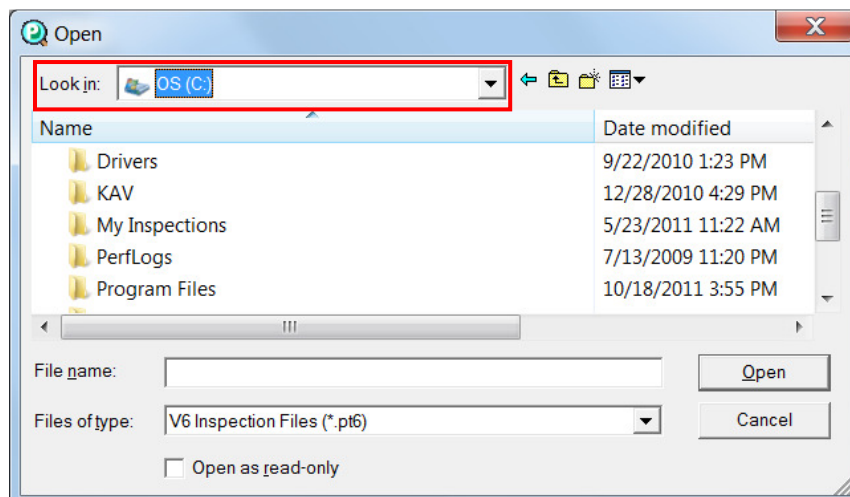
After upgrading to version 6 of Palm-Tech, you are still able to open all of your previous version 5 inspections right in Palm-Tech 6. This How To will show you how this is easily done.

Opening V5 files in V6

1. Click on 'Open an Existing Inspection' from the shell.

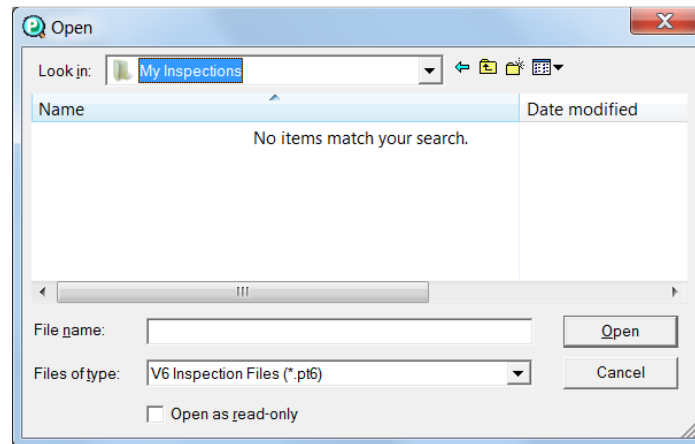


2. Next the Open window will pop up. Click on the dropdown arrow where it says 'Look In' at the top of the box and locate where your version 5 files are saved. The default location for version 5 files is in the My Inspections folder on the C drive. So we'll click the dropdown and select the C drive.

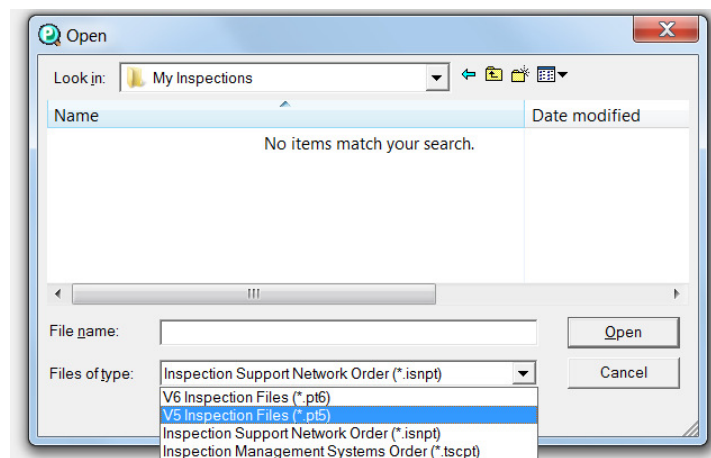


How to: Open V5 Files in V6

3. Scroll down till you see 'My Inspections' and double click on the folder.



4. At first the box may be empty, that is because it is looking for V6 files instead of V5. At the bottom of the box, click on the dropdown for 'Files of type' and click V5 Inspection Files (*.pt5).



5. Now with your version 5 inspection files showing, select the file you want and click 'Open'.

