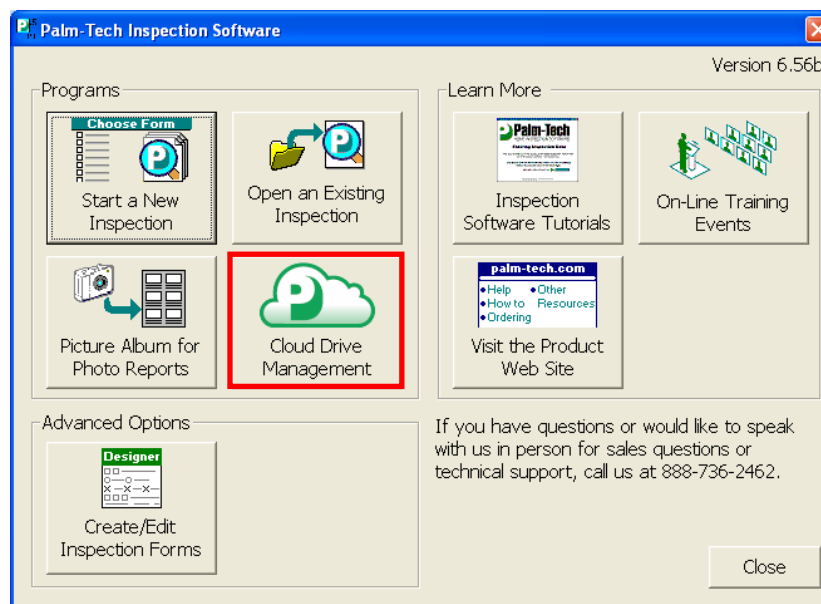


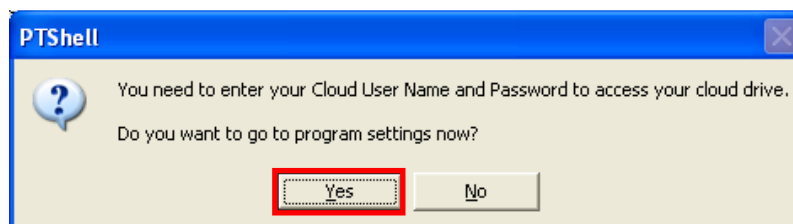
This How To will discuss how to backup all of your libraries and templates to the Cloud Drive so that they can be accessed from your Palm-Tech app.

Back Up your files to the Palm-Tech Cloud Drive when Entering User Name and Password for First Time

1. After you install Palm-Tech 6.5 to your desktop, you will need to set up your Cloud Drive. Once version 6.5 is installed, double click on your new Palm-Tech 6.5 icon. Then we'll click on the Cloud Drive Management button.

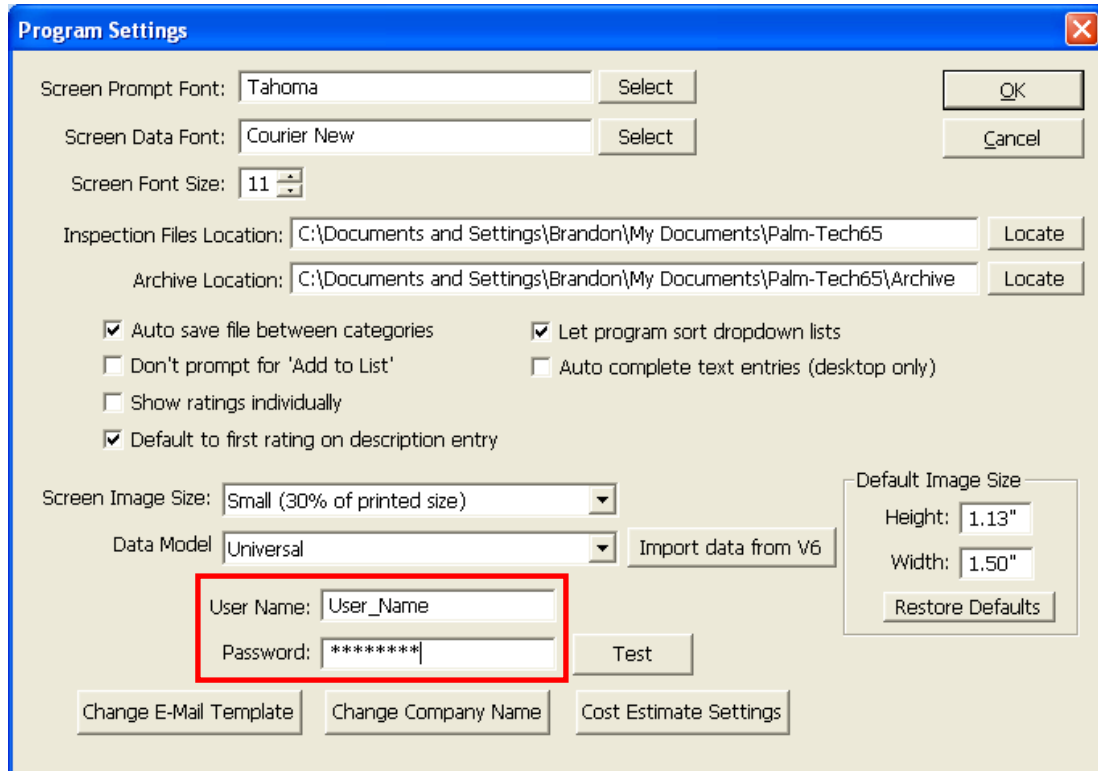


2. Since this is your first time accessing the Cloud Drive, you will need to insert your User Name and Password. After clicking on 'Cloud Drive Management', a window will appear asking if you want to go to Program Settings now so you can insert your login information, click 'Yes'.

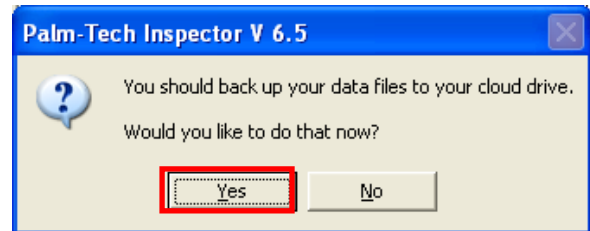


3. In the Program Settings window, you will need to insert the User Name and Password that was given to you by Palm-Tech.

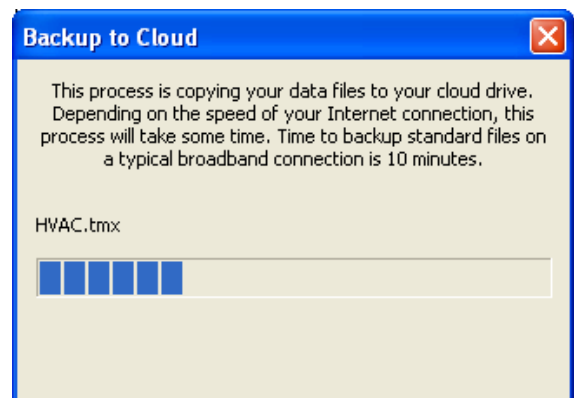
How to: Backup Data to the Cloud



4. Once you enter your login information, click 'Test' to confirm you entered it correctly. If the test is successful, the next window that pops up will ask if you want to backup your data files to your cloud drive, click 'Yes' to do that now. This will place all of your libraries and templates on your Cloud Drive so that they can be accessed from the Palm-Tech app.



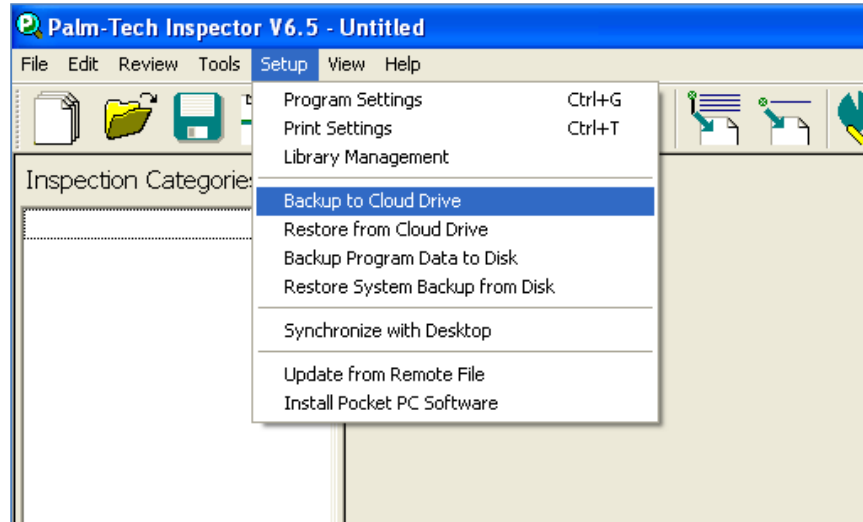
5. Next, a window will appear that shows your data being backed up to the cloud. This can take up to 10 minutes the first time you do it. Once finished, all of your libraries and templates will be available on your Cloud Drive and can be accessed on the Palm-Tech app.



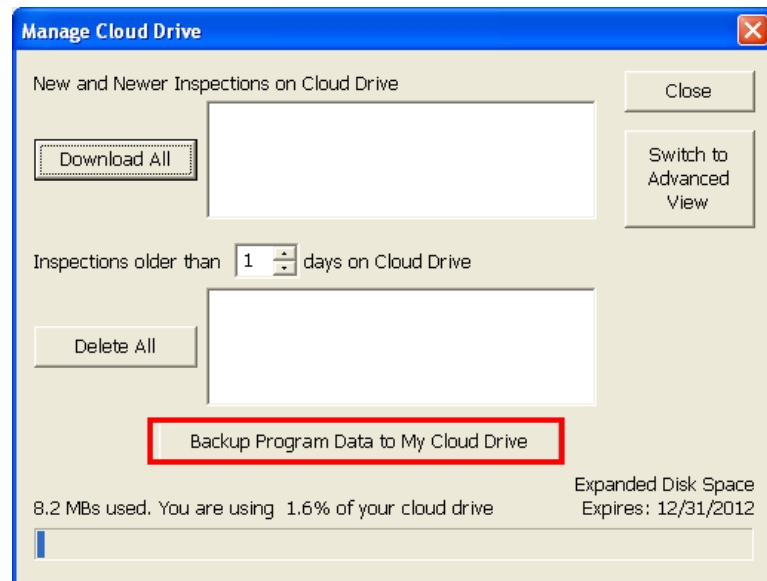
How to: Backup Data to the Cloud

Back Up your files to the Palm-Tech Cloud Drive

1. If you have already entered your User Name and Password on the desktop and only need to backup your files to the cloud, there are two ways to do this. For the first you will want to open an inspection in Palm-Tech and click on Setup > Backup to Cloud Drive.



Or you can click on the Cloud Drive Management button on the main screen and then click 'Backup Program Data to My Cloud Drive'.



How to: Backup Data to the Cloud

2. Next, a window will appear that shows you the progress of your data being backed up to the cloud. This can take up to 10 minutes the first time you do it. Once finished, all of your libraries and templates will be available on your Cloud Drive and can be accessed on the Palm-Tech app.

