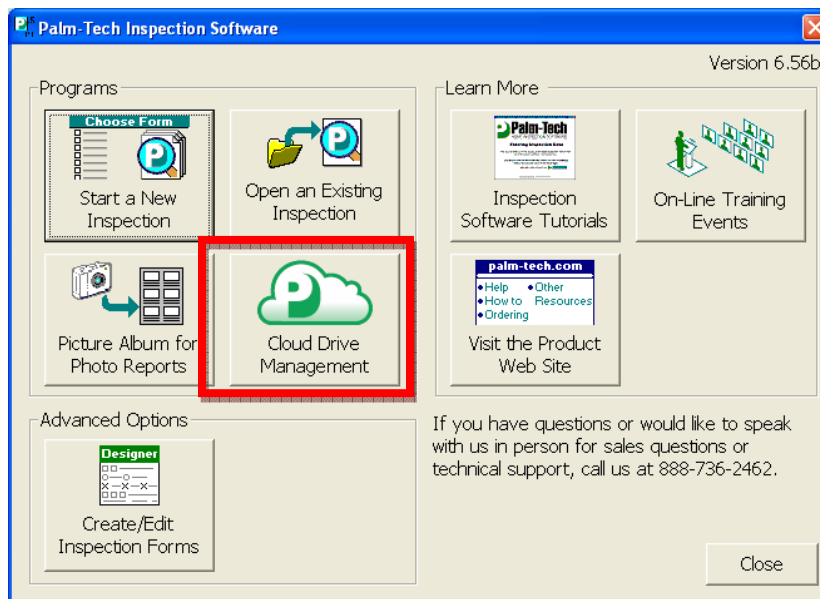


This document will walk through the steps of sending a library from a Desktop/Laptop to the App using the Palm-Tech Cloud Drive

Sending a Library to the App using the Cloud Drive

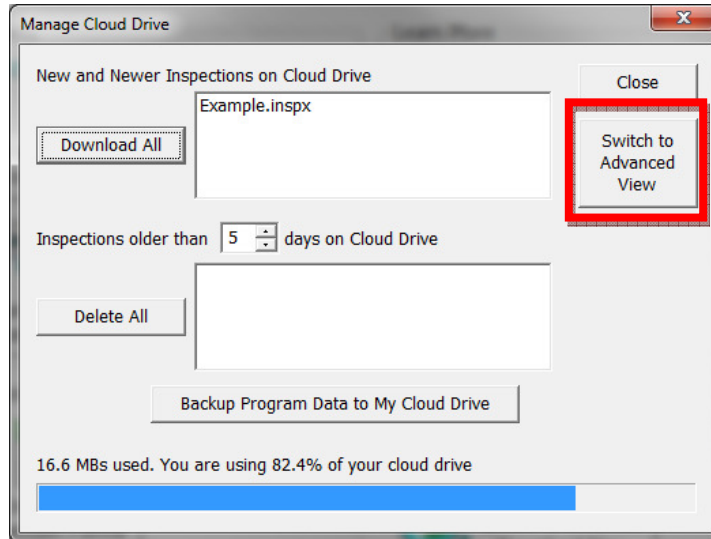
1. First, open the initial Palm-Tech screen and click on 'Cloud Drive Management'.



2. This will bring up the Manage Cloud Drive screen.

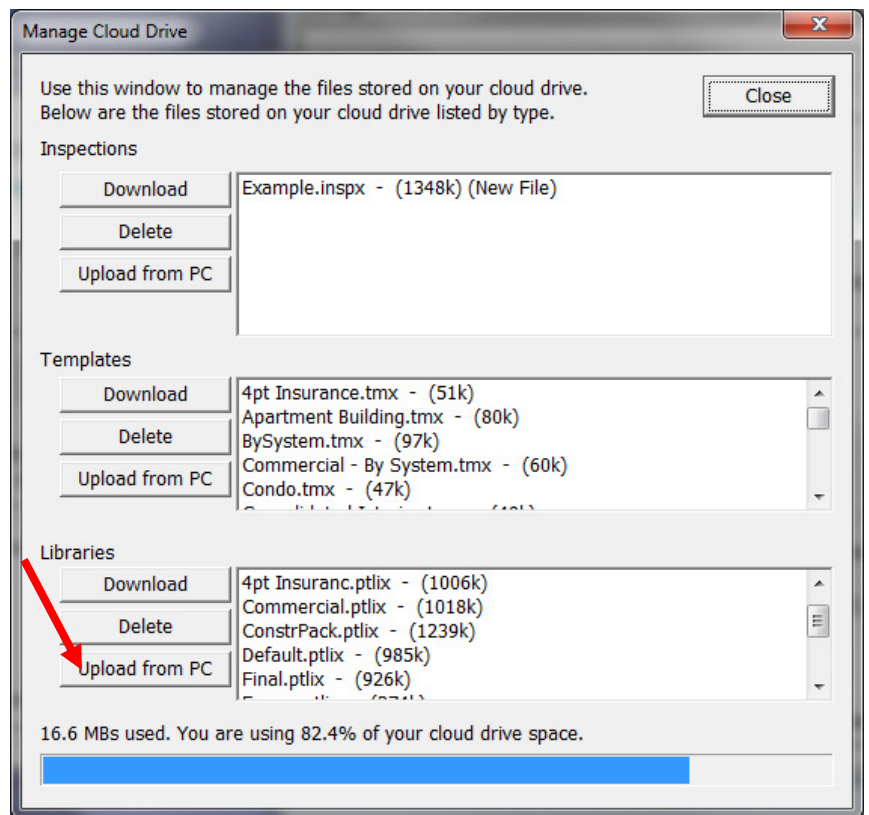
How To: Copy a library from Desktop/Laptop to App

- Next, click on the button on the right for 'Switch to Advanced View'



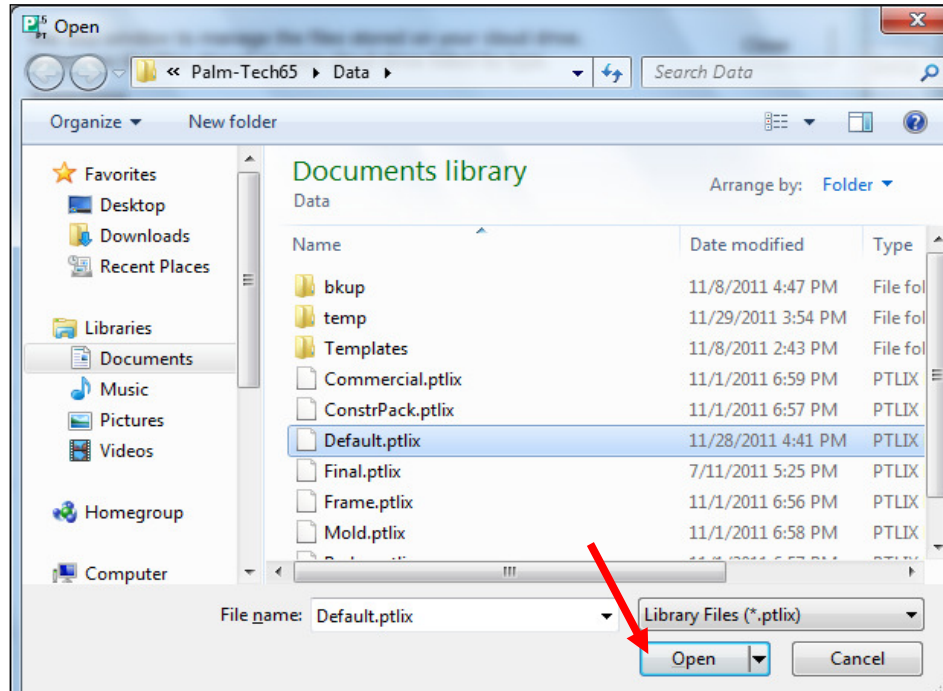
- This will bring up the Advanced Manage Cloud Screen. On this screen you can Upload files from your PC to the Cloud Drive, download files from your Cloud Drive to your PC, and delete files from your Cloud Drive.

We want to upload our library from our PC to the Cloud. To do this, click 'Upload from PC' in the section for Libraries.



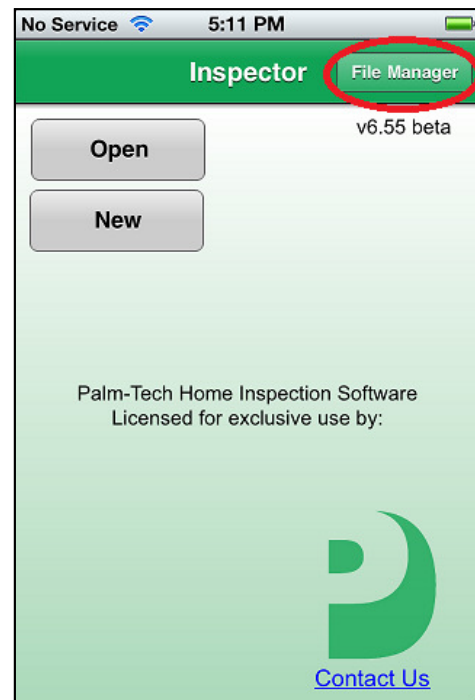
How To: Copy a library from Desktop/Laptop to App

- Now, we need to select which library we want to upload. For most users this will be 'Default.ptlix'. (Users who started with version 4 or earlier of Palm-Tech will also want to upload 'V4Converted.ptlix') Highlight the desired library file and click 'Open'.



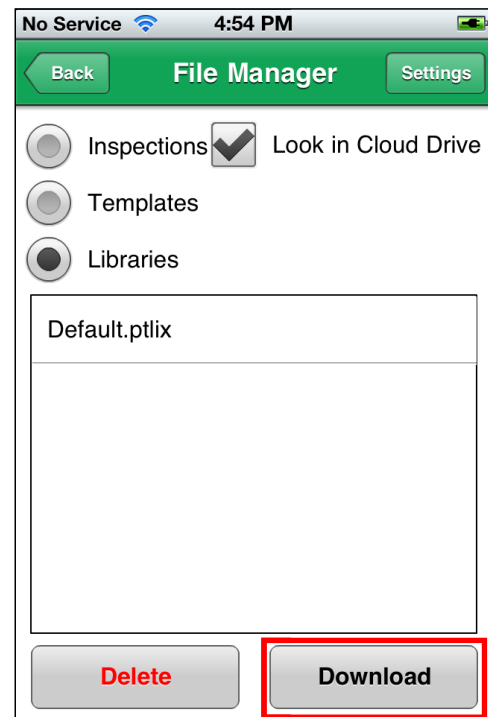
- After a few moments, the library will be on your Cloud Drive. You are now ready to open the Palm-Tech app on your portable device to download the library.

7. Now Open the Palm-Tech app on your mobile device. On the main screen, tap on **File Manager**.



8. This brings up the File Manager screen. Tap on 'Libraries' and then tap on 'Look in Cloud Drive'. This will then display all of the libraries on your Cloud Drive.
9. Now, tap on Default.ptlix and tap 'Download'. After a few moments, the download will be complete.

You can now tap **Back** in the top left corner to go to the opening screen.



10. Your library has now been sent from your Desktop/Laptop to your mobile device.