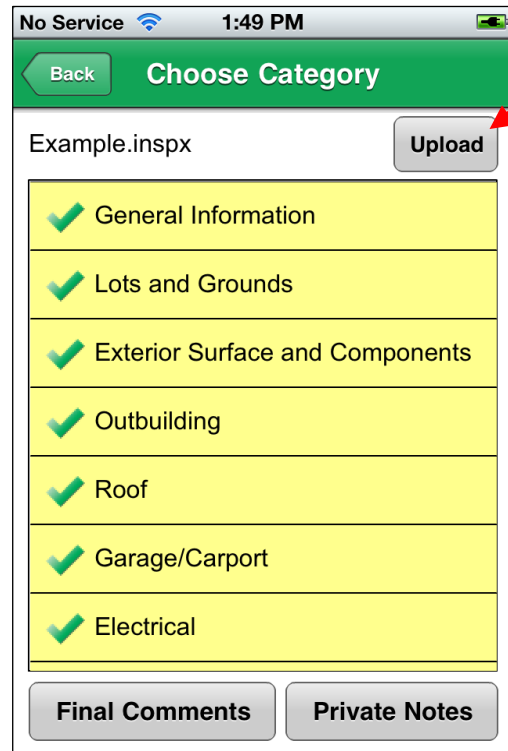


This document will walk through the steps of sending an inspection from the app to the Desktop.

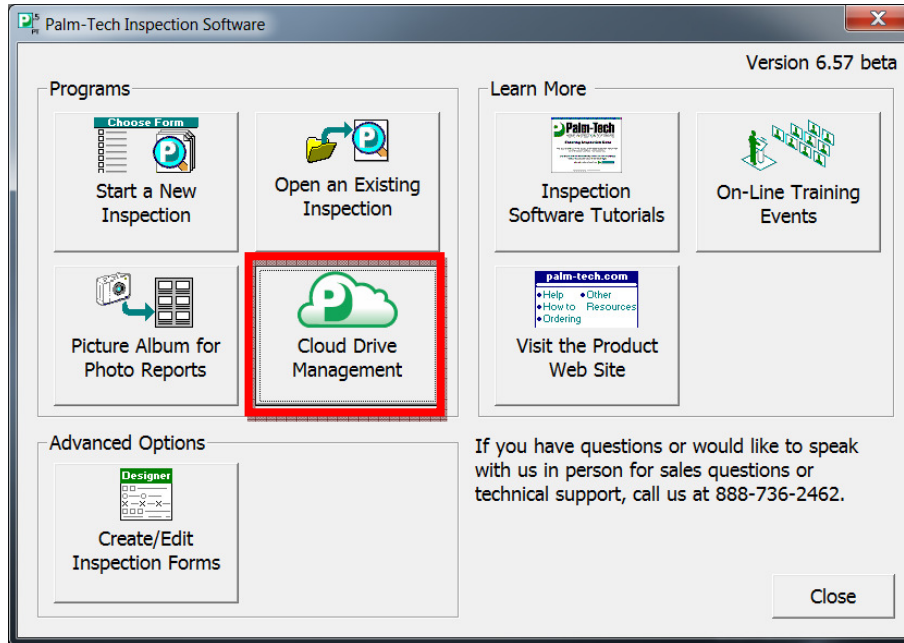
### **Sending an inspection from the app to the desktop**

1. With the inspection open, navigate back to the 'Choose Category' screen on the app.
2. Next, tap the '**Upload**' button in the top right corner to upload the inspection to your Cloud Drive.

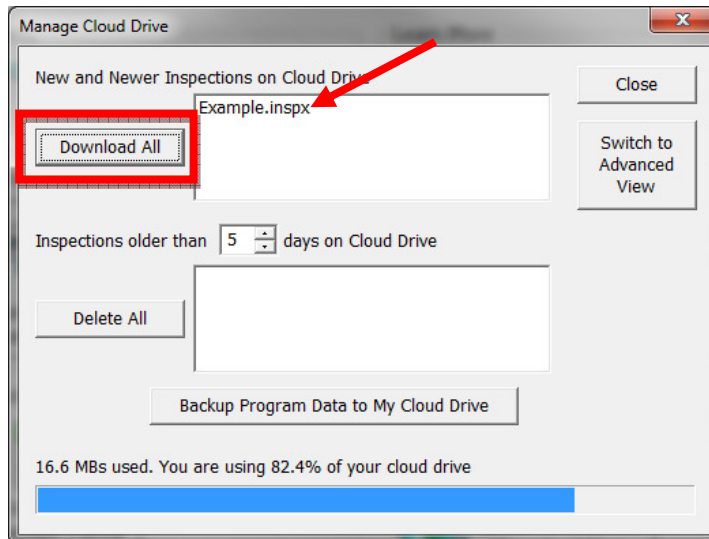


## How To: Send an inspection from the App to the Desktop

- Now that the inspection is on your Cloud Drive, we are going to switch over to your desktop. Open Palm-Tech 6.5 on your desktop and click on '**Cloud Drive Management**'.



- Now find your inspection and double click on it, or click '**Download All**' if you have multiple inspection files to download.



## How To: Send an inspection from the App to the Desktop

5. Once your inspection file is downloaded, click close.
6. Finally, click on 'Open an Existing Inspection' to bring up the 'Open' screen. You can now choose to open the inspection file you just downloaded by highlighting it and clicking 'Open'.

