



# How To:

## Import Version 7 Data into Version 8

**This step by step How To article explains how to import your templates and libraries from Palm-Tech 7 into Palm-Tech 8.**

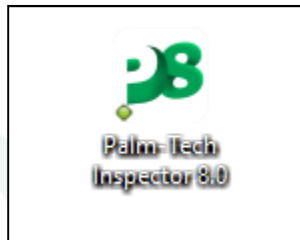
**For a complete list of available How To documents visit the Support section of our website: [www.palm-tech.com/support/](http://www.palm-tech.com/support/)**

# HOW TO: IMPORT VERSION 7 DATA INTO VERSION 8

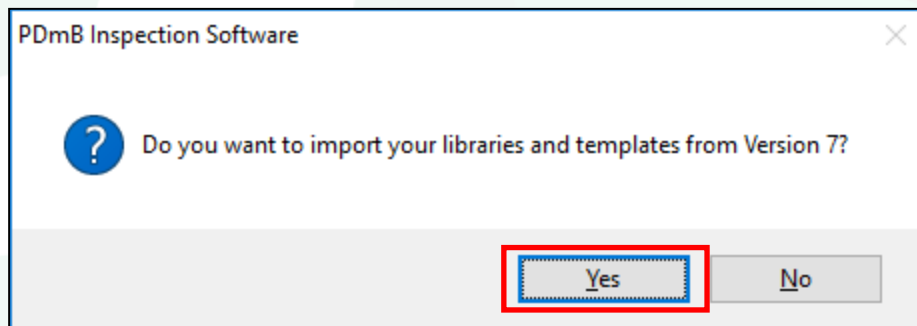
**When upgrading to Palm-Tech 8, you are able to import all of your templates and libraries from Palm-Tech 7 so that you don't lose any data when upgrading to the latest version.**

## Importing Data Immediately After Installing Version 8

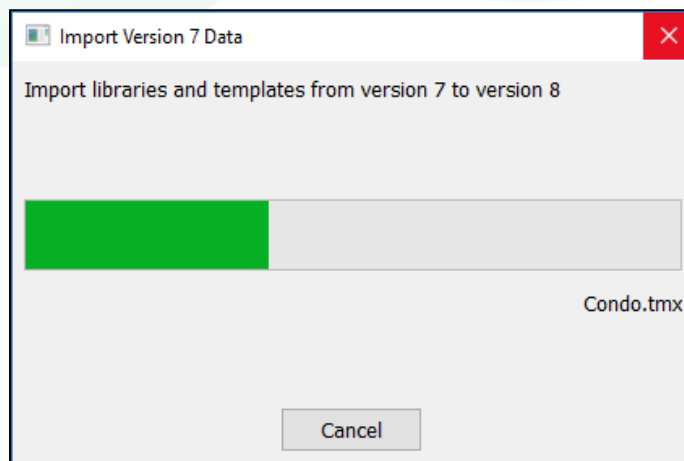
1. After installing Palm-Tech 8, double click on the Palm-Tech 8 icon on your desktop.



2. The program will recognize that you have version 7 of Palm-Tech installed on the PC and will ask if you want to import your libraries and templates into version 8. Click 'Yes'.



3. A box will appear on screen showing the import in progress.



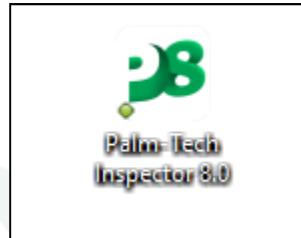
# HOW TO: IMPORT VERSION 7 DATA INTO VERSION 8

---

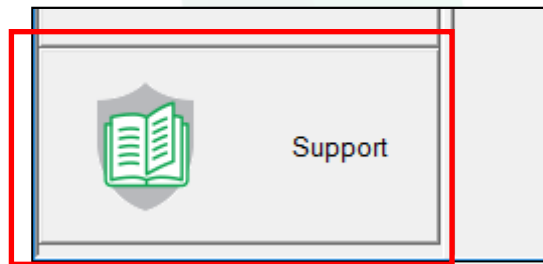
4. Once the import is finished the Palm-Tech program will be opened and ready for use. You have successfully imported your libraries and templates from version 7 into version 8.

## Importing Data After Installing Version 8

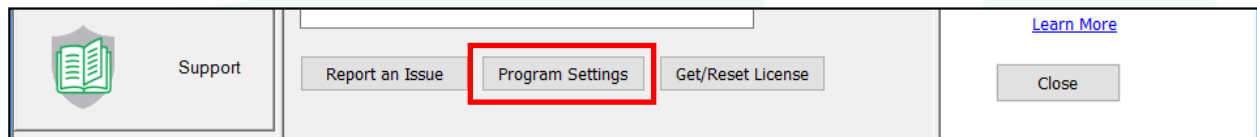
1. Double click on the Palm-Tech 8 icon from the desktop to open the program.



2. Click on the 'Support' button in the lower left corner of the screen.

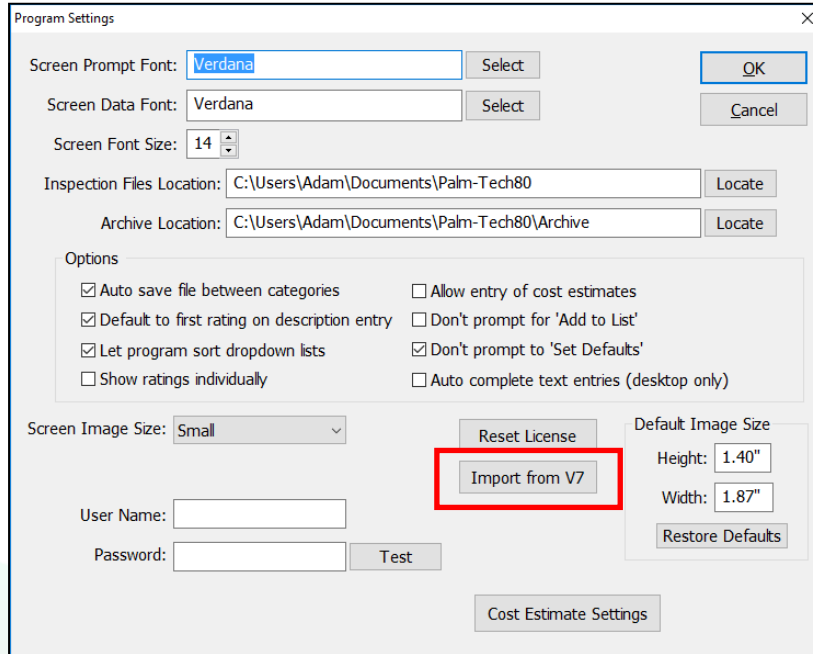


3. Next, click on the 'Program Settings' icon in the bottom middle of the screen.

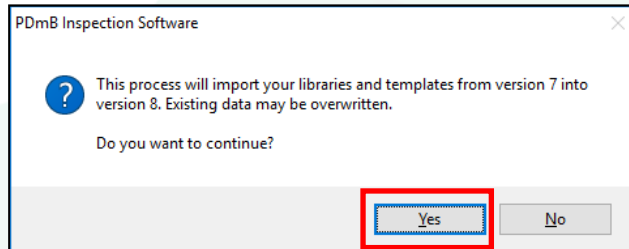


# HOW TO: IMPORT VERSION 7 DATA INTO VERSION 8

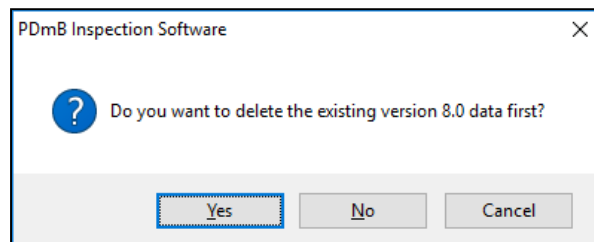
4. On the Program Settings screen click on the 'Import from V7' button.



5. A message will appear asking if you want to continue with the import. Click on 'Yes' to continue.



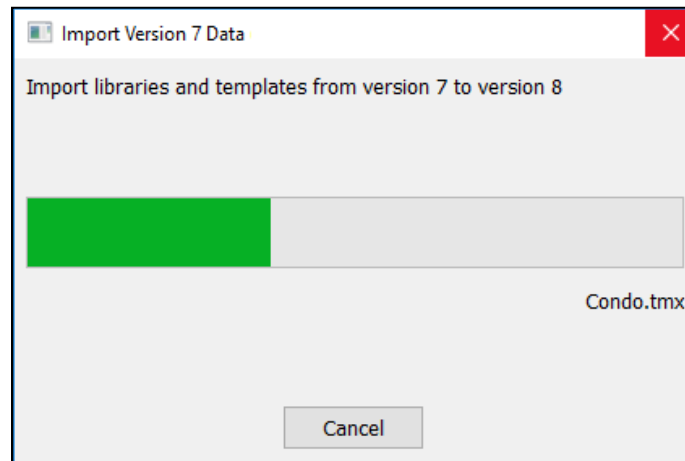
6. A second message will appear asking if you want to delete the existing version 8 data first. If you are just getting started with version 8 and don't have any data you want to save, click 'Yes'. If you click 'No', the program will ask you each time if you want to overwrite a file with the same name. Or you can click 'Cancel' to end the import.



# How To: Import Version 7 Data Into Version 8

---

7. A box will appear on screen showing the import in progress.



8. Once the import is finished the Palm-Tech program will be opened and ready for use. You have successfully imported your libraries and templates from version 7 into version 8.